

The Third International Meeting on

Environmental Biotechnology and Engineering



-) Risk assessment and environmental impact
-) Wastewater & solid waste management, treatment and reuse
-) Strategies for the protection and remediation of natural environments
-) Microbial ecology and molecular biology applications for a better environmental control
-) Environmental education and legislative aspect
-) New perspectives

**"The dead line to submit a presentation
at 3 IMEBE is next march 20, 2008."**

1st and 2nd International Meeting on Environmental Biotechnology and Engineering (1IMEBE, and 2IMEBE) took place in Mexico City in September 2004 and 2006.

**Palma de Mallorca
Spain**

21-25 September 2008



Terrestrial and aquatic ecosystems are affected by the interaction of factors from natural or anthropogenic origin. Both of them have direct or indirect impact on the environment causing deterioration of soil and water which are fundamental matrices for the vital cycles of the ecosystems and therefore, the earth's general equilibrium. To counteract this damage, a series of strategies must be defined to protect and remediate the terrestrial and aquatic systems. These strategies should focus on microbial ecology by promoting vital reactions of the ecosystems' matrices (soil, sediments, water).

The congress intends to translate fundamental knowledge on the microbial ecology of impaired ecosystems into technological solutions for the restoration of terrestrial and aquatic environments. The unification of fundamental and applied research is of utmost importance because they are interdependent and connected to the action-reaction of the environment.

OBJECTIVE

The main objective of the congress will be to integrate the different research with technology orientation (engineering, biotechnology) in such a way that their future action will be based on fundamental research (ecology).

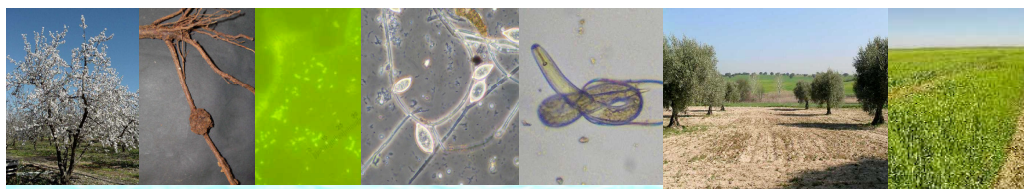


The action on the environment must be interactive with the participation of different disciplines having common objectives

- › One of the common objectives must be to preserve energy resources and create renewable ones.
- › Other common objective must be the re-use of waste which should be valorized and not seen any more as waste but better as "new resources".
- › Finally, the last but not the least common objective must be to minimize pollution and discharge to the environment in order to protect its ecology.

All this will be achieved only with the development of cleaner and cheaper technologies both on an environmental and an energy point of view as well as with an adequate environmental education and a sustainable development.

The topics treated in the previous conference included: soil and sediment remediation; aquifer remediation; solid waste management and treatment; hazardous waste; management and treatment; microbial ecology; molecular biology; applications to environmental problems; wastewater treatment; management, processes, reclamation, reuse, appropriate technologies; environmental chemistry; sustainable development; risk assessment and environmental impact; control and modelling of environmental processes and environmental education.



CONFERENCE TOPICS*

I. Risk assessment and environmental impact

Land degradation processes (soil pollution, erosion & salinization)
Pollution of the Aquatic ecosystems (water column, sediments & eutrophication)
Air Pollution (Mobile, fixed industrial & Landfill sources)
Global climate change, C and N cycling

II. Wastewater & solid waste management, treatment and reuse

Domestic & industrial wastewater
Municipal, animal, agro-food and hazardous wastes
Sewage sludge
Treatment technologies
 Physicochemical & membrane processes
 Aerobic & anaerobic processes, wetlands
 Integration of biological & physicochemical processes
Nutrient removal (N and P)
Emerging pollutants (endocrine disruptors, micropollutants, etc)
Agronomic valorization

III. Strategies for the protection and remediation of natural environments

Soil & aquatic environments including sediments
Appropriate remediation technologies
 Phytoremediation, bioremediation, bioaugmentation,
 biowaste addition, Electrokinetics, other techniques
Ecological processes and biocontrol
Sustainable agriculture
Control and modelling of environmental processes

IV. Microbial ecology and molecular biology applications for a better environmental control

Ecology of the natural and man made environments
Interactions between microorganisms
Interactions between microorganisms and plants
Functional and structural diversity of bacteria
Environmental enzymes

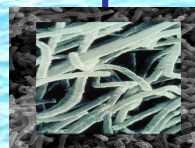
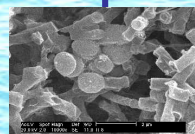
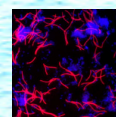
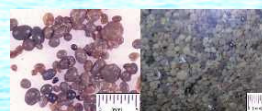
V. Environmental education and legislative aspect

Ecocystems and education
Way of life and sustainable environment
Health risks
Legislative aspect for environmental protection
Water & organic waste treatment
Soil conservation

VI. New perspectives

Renewable energy production from waste & wastewater
High value products from wastes other than biofuels
Agriculture & forest management for a better control of greenhouse gases
Technology needs in the developing world
Etc

** The different items included under each topics are only indicative and not exclusive. The submission of works on another subjects within these topics are encouraged by the organizers, particularly new aspects .*



ACTIVITIES

The main activities of the *3IMEBE* will consist of:

- Guest Conferences
- Oral Sessions
- Poster Sessions
- Roundtables
- Short Courses
- Competition of Best Presentations as poster will be organized during the conference.

LANGUAGE

English will be the official conference language. Possible English-Spanish translation will be available.

ABSTRACTS

Abstracts must be submitted through our website. They must contain the following information: Title, authors' names, full name of sponsoring institution along with a contact e-mail address. Abstracts will be 300 - 350 words long and no longer than one page. Abstracts must be written in English and will consist of one or two introductory sentences stating the problem, the main objective of the study and a brief summary of both the methodology and the results.

FULL MANUSCRIPTS

The manuscripts must not be more than 10 pages long including Tables & Figures. The text must be written with Arial 12 and single line space. These guidelines may be modified later and will be updated in the web site.

PUBLICATIONS

Oral and poster presentations will be published in the Proceedings of the *3IMEBE*, in CD book with ISBN. Papers will be published in English.

The organizers are looking at the possibility to publish the best papers presented at the conference in a special issue of an established journal. Negotiations are already well advanced with a journal from the environmental field (Impact Factor 2006: 1.477). Information about the progress of these negotiations will be given in the next future".

Registration Fees

	Early registration	Late registration
Full fee	€ 350	€ 400
Reduced fee*	€ 300	€ 350
Student fee	€ 200	€ 250
Accompanying person fee	€ 100	€ 110
Early registration (by June 20, 2008)		
Late registration (after June 20, 2008)		
* <i>Developing Countries</i>		

FELLOWSHIP OPTION

The organizers are looking at the possibility to provide fellowship to the best works submitted by students (age limit: 35 years). Priority will be given to students from developing countries.

The fellowship will cover the cost of the inscription, lodging at the student residence of the University and meals. The total number of fellowship will be of 15. The organizers will look also at the possibility to finance the trip of one of the selected students.

IMPORTANT DATES

Deadline for submission of abstracts	March 20, 2008
Authors notified for acceptance	May 20, 2008
Deadline for registration with discount	June 20, 2008
Deadline for receipt of full manuscript	July 20, 2008
Conference	September 21-25, 2008

ORGANIZERS



SPONSORS and COLLABORATORS



INTERNATIONAL SCIENTIFIC COMMITTEE

Hector Poggi Varaldo, CINVESTAV-IPN (Mexico)
Jaime García Mena, CINVESTAV-IPN (Mexico)
Mario T. Kato, University of Pernambuco (Brazil)
Carlos A. Chernicharo, Federal University of Mines (Brazil)
Alfons J.M. Stams, Wageningen University (The Netherlands)
Jules B. van Lier, Wageningen University (The Netherlands)
James A. Field, Arizona University (USA)
Claudia Etchebehere, University of Republic (Uruguay)
Adalberto Noyola, Engineering Institute, UNAM (Mexico)
Hervé Macarie, IRD-IMEP (France)
Steven Criquet, University Paul Cézanne -IMEP (France)
Tom Arnot, University of Bath (England)
Edward Stentiford, University of Leeds (England)
Luis Fernández Linares, UPIBI (Mexico)
Rosa Icela Beltrán, University of Hidalgo (Mexico)
Benjamin Otto Ortega Morales, University of Campeche (Mexico)
Walter Patricio Mac Cormack Antarctic Institute (Argentina)
Nikolae Dinev N. Poushkarov Institute of Soil Science Sofia (Bulgaria)
Krishna R. Reddy, University of Illinois (USA)
Sami Sayadi, Centre of Biotechnology of Sfax (Tunisia)
Anna Barra Caracciolo, IRSA-CNR Rome (Italy)
Jonathan Kahl, University of Wisconsin (USA)
Michael Schlöter, GSF-Institute of Soil Ecology (Germany)
Óscar Betancourt, FUNSAD (Ecuador)
Aboubakar S. Ouattara, University of Ouagadougou (Burkina Faso)
Colin Burton, CEMAGREF Rennes (France)
Lukas Y. Wick, Helmholtz Centre for Environmental (Germany)
Teresa Álvarez Aliaga, Biochemical Institute (Bolivia)
Jan Venglovsky University of Veterinary Medicine (Slovak Republik)

NATIONAL SCIENTIFIC COMMITTEE

Isabel Sastre Conde, IRFAP (Balear Island)
José L. Sanz, UAM (Madrid)
Maricarmen Lobo Bedmar, IMIDRA , EIADES (Madrid)
Cristina León Cofreces, ITACyL (Valladolid)
M^a Cruz García González ITACyL (Valladolid)
Fernando Fernández-Polanco, Univ. of Valladolid (Valladolid)
Pedro García Encinas, Univ. of Valladolid (Valladolid)
Juan Lema, Univ. of Santiago de Compostela (A Coruña)
Ramón Méndez, Univ. of Santiago de Compostela (A Coruña)
Aldo E. González, CIB-CSIC (Madrid)
Margarita Martín Fernández, UCM (Madrid)
Carlos Garcia Izquierdo, CSIC (Murcia)
José Luis R. Gallego, Univ. of Oviedo (Asturias)
Luis Gómez, UPM (Madrid)
Jesús Pastor, CSIC (Madrid)
Carlos Rad, Univ. of Burgos (Burgos)
Emilio Benítez León, CSIC. (Granada)
Anna Romani Inst. of Aquatic Ecology. (Girona)
Eloy García Calvo, UAH, IMDEA (Madrid)
Ana Elías Saénz, UPV (Bilbao)
Xavier Flotats GIRO- IRTA (Barcelona)
José Luis Rubio, CIDE - ESSC (Valencia)

ORGANIZING COMMITTEE

Local organizing committee

Isabel Sastre Conde. IRFAP Balear Island
José Luis Sanz. UAM Madrid
Antonio Martorell. IRFAP Balear Island
Jaume Vadell UIB. Balear Island
Xavier Guliaf. UIB. Balear Island
Gerardo López López IRFAP. Balear Island
Ana Ibáñez IRFAP. Balear Island
Emiliano E. Díaz, UAM. Madrid
Nuria Fernández, UAM. Madrid
Jeróni Vera UIB. Balear Island
Margalida Colómbas UIB. Balear Island
Catatina Aguiló. IbabSA. Balear Island
Rosa Carbó de la Hera. IbabSA. Balear Island

International organizing committee

Hervé Macarie. IRD-IMEP France
Fernando Esparza-García. CINVESTAV-IPN. Mexico
Elvira Ríos. CINVESTAV-IPN Mexico
Rafael Hernández. CINVESTAV-IPN Mexico
Ileri Roble. CINVESTAV-IPN Mexico
Lucho Constatino. UPP. Mexico
Susana Vázquez. CONICET. Argentina

CONFERENCE SITE

The conference will be held at University of Balear Island UIB in **Palma de Mallorca** (www.uib.es). It is just outside of the city.

Mallorca (from latin 'insula maior', and then 'Maiorica' meaning major island) is an impressive island, the biggest of the balearic archipelago, it's the most eastern region of Spain. The Mallorcans themselves are descended from a mix that includes Spanish, Arabs and Carthaginians. The geography of the island allows you to choose all kinds of activities, whether you're looking for an urban atmosphere, such as Palma, or if you prefer a more relaxed rural environment or it's countless sun-drenched gorgeous clean beaches

Palma is a wonderful city in which you have a number of monuments that you should be sure to visit. The gothic cathedral with its stained-glass windows dominates the waterfront and backs onto the oldest part of the city where churches of medieval, gothic and baroque periods are found along with Renaissance style buildings (like the City Hall) and stately homes with beautiful patios. The maze of streets at the back of the cathedral leads to the beautiful Banys Àrabs, the old Moorish bath house which is worth a visit. The Palau de l'Almudaina stands opposite the cathedral entrance. L'Almudaina used to be the palace of the Moorish governors and later of the Mallorcan Kings. The Castell de Bellver (the Castle of Bellver) is a beautiful well-preserved fortress dating back to the 14th century. It is located on the top of a wooded hill and has spectacular views over Palma Bay.

www.a-palma.es; <http://www.emtpalma.es/>;

Weather in Mallorca. Mallorca is typically Mediterranean with hot, dry hot summers in the high 20°s or even 30°s, and mild winters, with the temperatures roughly half that of summer (rarely below 5°). Mallorca experiences irregular rainfall, mostly tending to fall between autumn and winter. Generally speaking Mallorca presents a high humidity level, as it is an island



Communications to Palma. Son Sant Joan" international airport lies 8 kilometers east of Palma and is the main access to the island. There are direct flights to Mallorca from every major national airport such as Madrid's Barajas and Barcelona's Prat. Direct connections from other important Spanish cities are available as well. You can take advantage of these connections to take in some of the wonderful sights that can be seen in these two cities before or after the Meetings. There are also direct low-cost flights from other European cities; especially from Germany and England.

Sant Joan airport: <http://www.mallorcawebsite.com/htmls/airport.htm>

National Flights: www.iberia.com; www.spanair.com; www.aireuropa.com

Low cost flights: www.vueling.com, www.airberlin.com; www.easyjet.com; www.condor.com;

If you arrive in Palma by boat:

<http://www.trasmediterranea.es/trasmeweb/inicio.do>

<http://www.balearia.com/>



REGISTRATION

Detach Pre-registration form to receive registration information that will follow, Consult our Web site*:

www.3imebe.org
(still under construction)

To obtain more information about the conference and sending the pre-inscription write to:

imebe2008@gmail.com

* In the web site you will get more information about Abstract submission and preparation.

3rd-IMEBE FIRST ANNOUNCEMENT pre-inscription

Family Name:.....

First Name:.....

Company/Institute:.....

Position:.....

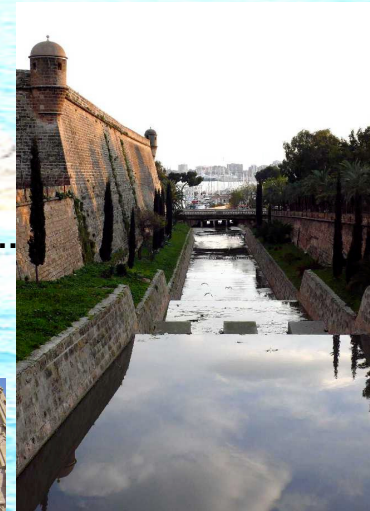
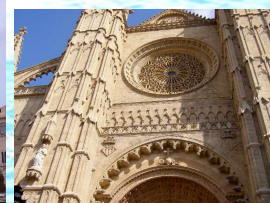
Address:.....

Tel:..... **Fax:**.....

e-mail:.....

☐ I intend to participate to the conference

☐ with an oral communication ☐ a poster



Chairmen

Dr. Isabel SASTRE CONDE
IRFAP

Conselleria d'Agricultura i Pesca
C/ Eusebi Estada n 145 . 07009 Palma de Mallorca. SPAIN
Phone/Fax: (+34) 971176100 ext 65358/ (34) 971177107
Email: misastre@dgagric.caib.es
Web: <http://www.caib.es>

Dr. José Luis SANZ
Dpto. de Biología Molecular
Universidad Autonoma de Madrid
Cantoblanco, Crtra. de Colmenar, Km.15 28049 SPAIN
Phone: +34-91-497.8078 / 4303/ 3601 Fax: +34-91-497.8087
E-mail: joseluis.sanz@uam.es
<http://www.cbm.uam.es/jlsanz>